

# Wyse VX0L to V30L Conversion Kit Installation Guide

This guide provides information on converting the Wyse Linux or XPe operating system of your Wyse VX0L thin client to the Wyse CE operating system. The software loaded on the thin client will be: Wyse-enhanced Microsoft® Windows CE 6.0.

The information in this document is intended for the following conversions:

- V10L to V30L
- V50L to V30L
- V90L to V30L

**NOTE:** You can contact Wyse Customer Support to assist in performing the thin client operating system conversion of your thin client existing operating software to Wyse-enhanced Microsoft® Windows CE.

## What is in the Kit

Included in the kit are the required software images, software CD-ROM, Wyse conversion label, Microsoft Certificate of Authenticity (COA) label, and Ericom PowerTerm® label.

## System Requirement

Wyse-enhanced Microsoft® Windows CE requires a minimum of 32 MB of flash memory and 64 MB of RAM.

## Required Software

1. Wyse Simple Imager 1.3.2 - located under Re-imaging Utility at:  
[http://www.wyse.com/serviceandsupport/support/dlOraFW.asp?which=57&model=S30\(Windows%20CE\)](http://www.wyse.com/serviceandsupport/support/dlOraFW.asp?which=57&model=S30(Windows%20CE))
2. WISard 3V32 Conversion Package - located on the conversion kit CD-ROM
  - Pull.i2c
  - Pull.i2d
  - Pull.k
  - Push.i2c
  - Push.i2d
  - Push.k
3. CE image for V30L/LE - located under Downloads for V30L / V30LE(Windows CE) at:  
[https://www.wyse.com/serviceandsupport/support/dlOraFW.asp?which=77&model=V30L%20/%20V30LE\(Windows%20CE\)](https://www.wyse.com/serviceandsupport/support/dlOraFW.asp?which=77&model=V30L%20/%20V30LE(Windows%20CE))

## Related Online Resources Available at Wyse

Administrator, User, and ReadMe documentation for your thin client model are available at:  
<http://www.wyse.com/manuals>

Wyse thin client features can be found in the Datasheet for your specific thin client model. Datasheets are available on the Wyse Web site at:  
<http://www.wyse.com/products>

## About the Conversion Process

The conversion process will require a standalone Windows XP Pro PC configured with the Wyse Simple Imager 1.3.2 (WSI). This document describes the use of WSI to add the V10L, V50L, and V90L to V30L conversion files and load the firmware to the device to be converted.

### Step 1 - Installing Wyse Simple Imager

After downloading the Wyse Simple Imager 1.3.2, use the installation instructions for this tool (also located in the same directory) to install WSI. Step 2 assumes WSI is correctly installed and configured.

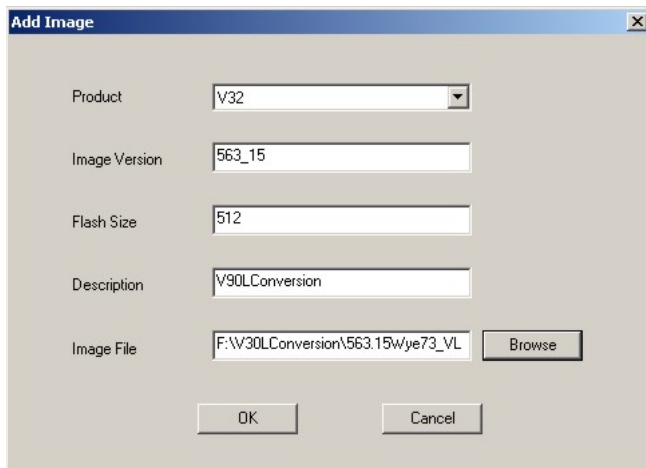
### Step 2 – Inserting the V30L Conversion Image

From the WISard Conversion Package folder, copy the 3V32 folder to the WSI installation directory. Typically this is *C:\inetpub\ftproot\Rapport\Tools\sa*.

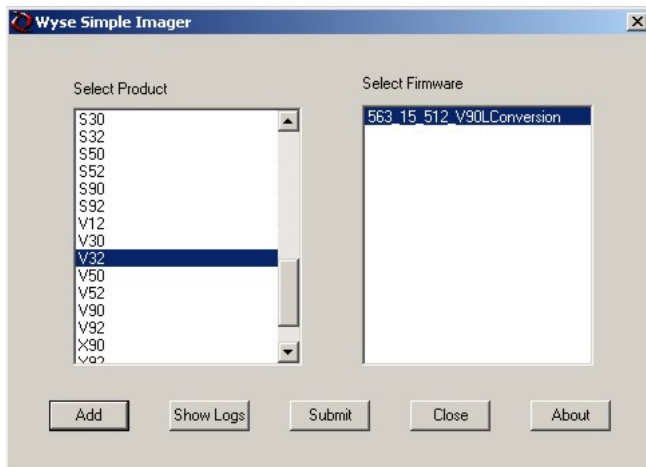
### Step 3 - Installing the Conversion Image

For details on using WSI, refer to the WSI documentation. An overview of the required steps is as follows:

1. Wyse CE for V30L - located under Downloads for V30L / V30LE(Windows CE) at: [https://www.wyse.com/serviceandsupport/support/diOraFW.asp?which=77&model=V30L%20%20V30LE\(Windows%20CE\)](https://www.wyse.com/serviceandsupport/support/diOraFW.asp?which=77&model=V30L%20%20V30LE(Windows%20CE))
2. Download the file to any directory on the WSI server.
3. Start WSI.
4. Select the V32 product from the *Select Product* menu.
5. Upload the V30L CE image into WSI using the *Add* command button. Be sure to use 128 for the flash size for the V10L and V50L, and 512 MB, 1 GB, or 2 GB for the V90L.



6. Browse to locate the VLxxx\_xx\_WyeXX.bin file in the xx-xxWyexx\_VL30\_PXE folder.
7. Download the conversion image to the thin client by using the *Select Firmware* menu and *Submit* command button.



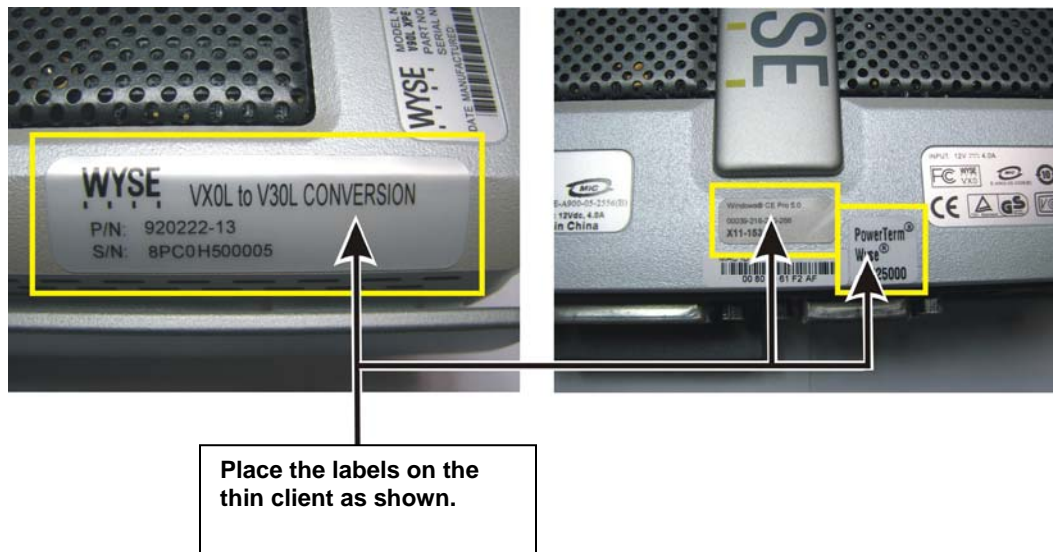
8. Reboot the thin client and execute PXE to complete the image process. If PXE is disabled on the thin client at boot, hold down the *P* key at boot or use the BIOS User Interface to move PXE to the first boot device. This can be done by pressing the *Delete* key while the Wyse BIOS splash scene is displayed. The default password is *Fireport* (if it has not been changed).

#### Step 4 – Completing the Conversion Process

After loading the conversion image using WSI, the thin client should automatically reboot. If DHCP auto-update options are defined, the thin client will check the RCA directory at boot and auto-update (if required) to the code stored at this location. If DHCP auto-update is not configured in your environment, manual updates can be performed through the thin client user interface. For more information on managing CE manually or through DHCP, refer to the Wyse CE documentation on the Wyse Web site.

#### Step 5 – Attaching the License Entitlement

The Wyse conversion kit is supplied with three labels that must be attached to each device as shown in the diagram below (sufficient licenses must be purchased for every device to be converted to a V30L).



**CAUTION:** Failure to install the license labels may cause delays in service and support. This serial number must be given to the Customer Support Technician to validate entitlement to support and service from Wyse. Failure to do so will result in the original operating system being loaded on the device and is in breach of your license agreement.

#### Technical Support

To access Wyse technical resources, visit <http://www.wyse.com/support>. If you still have questions, you can submit your questions using the [Wyse Self-Service Center](#), or call Customer Support at 1-800-800-WYSE (toll free in U.S. and Canada). Hours of operation are from 6:00 A.M. to 5:00 P.M. PST, Monday through Friday. To access international support, visit <http://www.wyse.com/global>.